



August 2023

Newsline

BOARD MEETINGS August 29 ■ September 26 (9:30 am at Cohasset Service Center. Members welcome)



IN THIS ISSUE

- Serving Members and Cooperatives
- The interconnected energy grid
- Unclaimed capital credits
- Enhancing cybersecurity

Local student returns from Electric Cooperative Youth Tour



Lake Country Power sponsored Sage Sorenson from Duluth East High School to attend what has been called a “trip of a lifetime” to Washington, D.C. Sorenson traveled in June with nearly 35 other Minnesota students to join more than 1,400 high schoolers from across the country to participate in the Electric Cooperative Youth Tour.

Each year the Minnesota Rural Electric Association (MREA) organizes and leads Minnesota’s student delegation to Washington, D.C. While on tour, students meet with elected representatives in the U.S. House and Senate to discuss the process of government and issues of the day, while increasing their knowledge of electric cooperatives, community development and American history.

Since 1958, the nation’s electric cooperatives

have sponsored more than 58,000 high school students on the Electric Cooperative Youth Tour — a joint effort between the National Rural Electric Cooperative Association (NRECA) and statewide electric cooperative associations like MREA.

“Electric cooperatives operate in a way that puts member-owners in the driver’s seat,” said Darrick Moe, CEO and president of MREA. “Staying in tune with our political environment is one important aspect of doing so successfully.”

Students from Minnesota travel safely together for a week with co-op chaperones on a charter bus after their flight lands at Ronald Reagan International Airport. Interested students or parents should email Tami Zaun at tzaun@lcp.coop or call 800-421-9959, ext. 7152. The application process opens this winter for the 2024 tour.

Youth Tour testimonial from Sage Sorenson

I was recently sent as a representative for Lake Country Power on the NRECA Electric Cooperative Youth Tour to Washington, D.C., with 34 other delegates from across Minnesota, as well as hundreds of others from across the country.

We spent five days touring attractions around the D.C., area as well as meeting with our state representatives at the U.S. Capitol.

Over the course of this trip, we saw many amazing sites and met many amazing people. My favorite part was making new friends that I would have never met otherwise. We all bonded very quickly and had a great time together.

Everybody was given pins that represent their state to trade with other participants. Pin trading was so fun, and it helped you meet and interact with all the delegates from different parts of the country. We also had group dinners with the other delegates, played games and had dances with them after dinner.

On the first day, we toured all the memorials in Potomac Park. We learned so much about how each memorial is calculated and the symbolism within them.

I also really enjoyed the day we spent walking around the Smithsonian Institution. We had the opportunity to go through all the museums around the National Mall. Although we spent a whole day at the museums, there is so much to see, and one day was not nearly enough time to see it all.

We also toured the U.S. Capitol and got to see the Senate and House of Representatives Galleries. We were given the opportunity to ask our state representatives questions about prevalent issues regarding electrical co-ops as well as other topics.

Overall, this trip was very impactful, and I am so thankful for all of the things I learned and the memories I made.

Thank you to Lake Country Power for giving me this wonderful opportunity!



Come see Lake Country Power in Duluth

The 2023 North Country EV Show & Tell Event is set for Saturday, September 9 at Bayfront Festival Park in Duluth, joining the city's Harvest Festival this year.

Gates open at 10 a.m. and the event concludes at 4 p.m. Admission is free and parking is \$10.

Several types of EVs will be available to the public for viewing and the traditional and ever-popular discussion



panel of EV industry experts will run from 11:30 a.m. to 12:30 p.m. Experts will share their knowledge and experience with electric vehicles, including time to take questions from the audience.

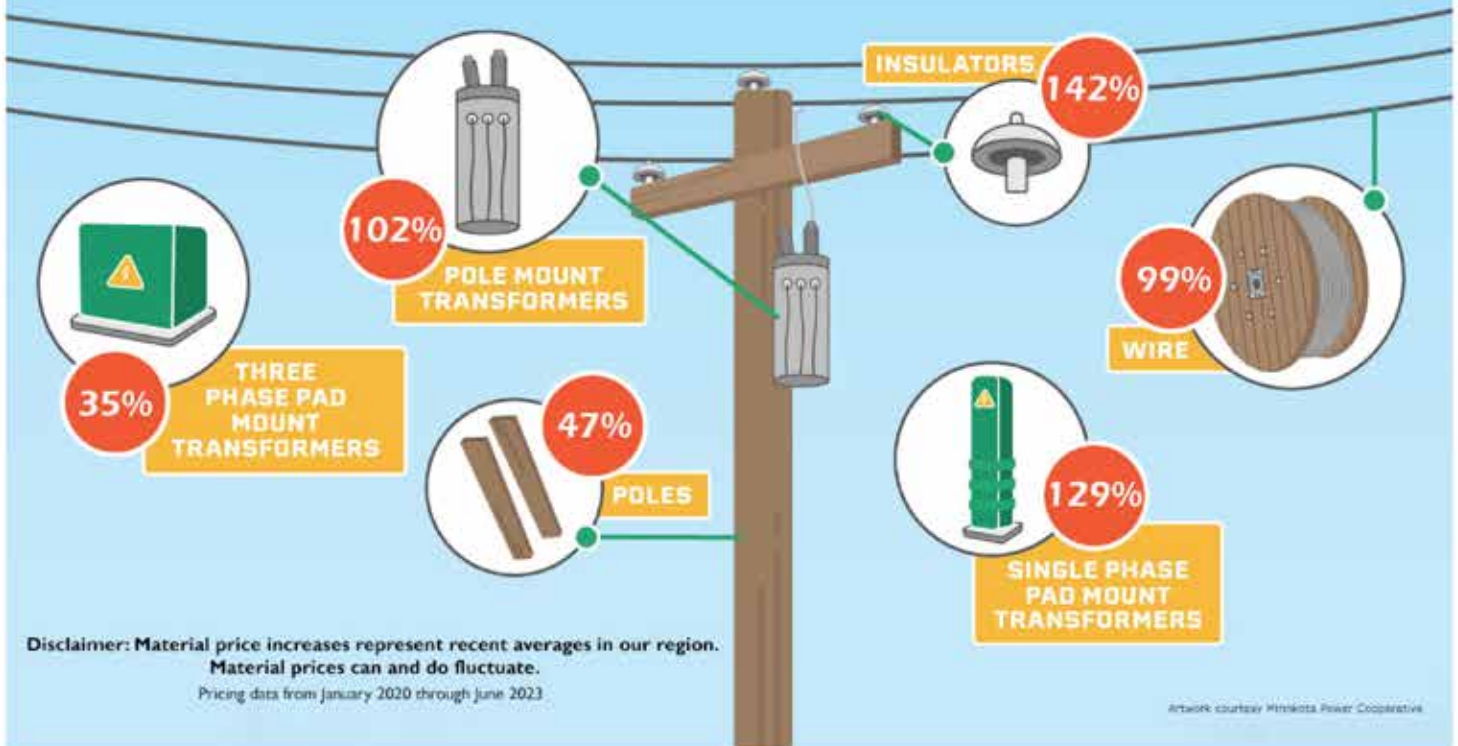
Other energy experts from Great River Energy, Lake Country Power and Minnesota Power will hold separate roundtable discussions on a variety of topics impacting members and the industry.

This year's show is sponsored by Great River Energy, Cooperative Light & Power, Lake Country Power and Minnesota Power.

If you're considering an electric vehicle, already own one, or are just interested in learning more about EVs, save the date and head down to Bayfront.

The Harvest Festival is a one-day family-oriented event featuring a large-scale farmers market, live music all day, an Energy Fair, nonprofit exhibitors tent, educational demonstrations and much more. The Harvest Festival is a project of the Lake Superior Sustainable Farming Association. ■

THE RISING COST OF ELECTRIC UTILITY MATERIALS



The electric connection you may not know about

Each day we live with electricity at our fingertips, rarely thinking about the complex system that brings it to our homes, farms and businesses. The electric grid is all around us, made up of power plants, wind turbines, power lines, substations and communications technology owned and operated by different utilities that all have one common goal: to keep electricity reliable and affordable.

Lake Country Power's wholesale power provider, Great River Energy, is a voluntary member of the Midcontinent Independent System Operator (MISO), which operates the power grid across 15 U.S. states and the Canadian province of Manitoba. MISO helps the region's electric providers deliver reliable, affordable energy in three ways:



It acts as 'air traffic controllers'

Forty-two million people depend on MISO every day. Think of MISO as the air traffic controller to the region's electric grid. Using sophisticated technology, processes and

procedures, MISO maintains a broad view and control of the grid that goes beyond any one utility. This helps utilities maintain reliability on a regional level and prevent emergency operating situations.

It manages the energy market

In past decades, electric cooperatives would generate power and deliver it via power lines to their members. Coordinating the power flows and transactions at that time was a manual process requiring many agreements between utilities. Today, all electricity generation is offered into the MISO market and cooperatives buy back what they need to serve their member-consumers. The MISO energy market helps keep electricity affordable by ensuring the lowest cost generation available is used first to supply member-consumers and minimize flow constraints across the grid. MISO also provides improved price transparency with energy market price changes occurring every five minutes.

It plans transmission

Maintaining a reliable high-voltage transmission system requires ongoing planning efforts. Utilities conduct their own transmission planning and they collaborate with MISO, which plans the transmission system that serves the entire region. MISO ensures the system is prepared to meet future needs from a regional perspective. It works with the region's electric utilities to minimize the cost of transmission, generation and the energy on the system. Using advanced modeling and research, MISO helps ensure reliable and efficient electricity transmission in the region and beyond.

Great River Energy works closely with MISO to make sure when it designs a plan for the region's electric system, it will serve cooperative members well in terms of both reliability and affordability.

Visit misoenergy.org to learn more about MISO. ■



RECIPE CORNER RHUBARB BARS

From the
Kitchen of:
Marilyn Kiehl,
Cloquet



- 1 ½ cups flour
- 1 ½ cups oatmeal
- 1 cup brown sugar
- ½ teaspoon baking soda
- 1 cup soft butter

Mix ingredients until crumbly.
Pat $\frac{3}{4}$ into a 13x9 pan.

- 3 cups rhubarb
- 1 ½ cups sugar
- 2 tablespoons cornstarch
- ¼ cup water
- 1 tsp vanilla

Dissolve cornstarch in water. Mix all and bake at 350 degrees for 30 to 35 minutes until thick. Spread on crust, sprinkle top with crumbs. Can add nuts.

Submit your favorite recipe to Lake Country Power, Attn. Editor, 8535 Park Ridge Drive, Mountain Iron, MN 55768, or e-mail jburnes@lcp.coop. If your entry is printed in Newsline, you'll receive a \$5 credit on your electric bill. Entries must include name, address and phone number on account.



Q: Thinking about adding a new appliance such as a fridge or maybe even a hot tub? Want to know how the new infrastructure will impact your bill?

A: Check out SmarHub, specifically "My Usage." With the "Usage Planning" tool, you can create a marker for a specific point in time, such as when the new item was installed or removed, to help track any changes in energy usage.

UNCLAIMED

CAPITAL CREDITS

An updated list on LCP's website, www.lakecountrypower.coop, provides the names of members who have not cashed their capital credit check, or we no longer have a forwarding address. If you have any information, please call LCP at 800-421-9959 (press 5). Any money not claimed will be contributed to a tax-exempt purpose such as LCP's scholarship or education improvement programs.



A BRIGHT WAY TO SAVE.

Enjoy 30% off all specialty LED bulbs, through August 31!

ENERGY STAR® certified specialty LED bulbs use up to 80% less energy and last up to 22 times longer than incandescent bulbs, which means you'll save on both energy and replacement costs. LED bulbs are also great for both indoor and outdoor fixtures, since they work consistently despite temperature or humidity changes.

ENERGY WISE  MN

Make the upgrade today and take 30% off, while supplies last!

Visit energywisemnstore.com

Enhancing cyber resilience in utilities

Delivering reliable and affordable energy is of utmost importance at Lake Country Power. But protecting member information is equally as important to strengthen information security and help build resiliency into operations.

You can rest easy knowing your cooperative is part of a larger network with extensive resources and an ability to ensure member information is secure — even as instances of cyberattacks continue.

Great River Energy, wholesale power provider to Lake Country Power, encourages and facilitates collaboration on topics related to cybersecurity among its 27 member-owner cooperatives. Working together in a technology-driven environment, co-op representatives discuss their successes and opportunities in security practices.

This allows participating cooperatives to learn from each other and enhance cyber resilience. By working together and as part of a national effort, cooperatives help keep the grid secure.

Technology is a critical component of any cybersecurity toolbox. Great River Energy complements the efforts of Lake Country Power to protect the grid and keep the



lights on by investing in the most up-to-date technologies for network defense and vulnerability management.

Segmenting and filtering information networks ensures only authorized communications are permitted to the most essential transmission and power supply assets. In addition, deliberate and expedient deployment of essential patches and regular scanning for security vulnerabilities ensures reliability and protects technology assets from day-to-day threats. ■

A life and career in rural cooperatives

Growing up on a small grain farm on the Minnesota-Iowa border, I became aware of cooperatives from an early age. It seemed like every business my parents dealt with was a cooperative, except the Ben Franklin candy shop and the independent grocery store.

Fond memories were made attending the Farmers Cooperative Elevator Co. grain elevator appreciation day with a free ham sandwich and lemonade. Even our telephone, bulk farm fuels, propane and what we called the REA, which was our electric coop.

After high school I enlisted for a six-year tour in the Army, with three of those years being active duty, in which I spent two years and three months overseas in Europe during the Cold War.

Various jobs and career paths later, I jumped at the chance to take a job with an electric cooperative out of Brainerd and started in January 1990. Six years later, along with my wife



By Jeff
SHELDON
District 4
Director

Shelly and two daughters, we moved to rural Cohasset where I started working at Dairyland Electric Cooperative (now known as Lake Country Power after the consolidation in January 1997).

In 2019, I decided to retire after nearly 30 years of working in the rural electric co-op world. My entire career was spent in the member service department starting with residential accounts and ending with serving agriculture, commercial and industrial accounts. My primary goal during my tenure was helping members in all energy classifications become more efficient and use energy smarter. LCP has many Energy Wise programs and tools to assist members who want help.

Our family has enjoyed working and living on our rural hobby farm in Cohasset. Having worked at LCP, and now on the board of directors, I can truly say LCP has a highly-trained and motivated workforce to serve its members.

I'm proud to be representing District 4 as your board representative. ■

Jeff Sheldon was elected by members in Lake Country Power District 4. He can be reached at 218-398-6104 or jsheldon1@lcp.coop.

Member Appreciation Days

Tuesday, August 29
Cohasset Service Center
26039 Bear Ridge Drive

Wednesday, August 30
Mountain Iron Service Center
8535 Park Ridge Drive

Thursday, August 31
Kettle River Service Center
4065 Hwy 73 South

11:00 a.m. - 1:30 p.m.
each day



Bring the family and connect with your cooperative.

Fun for all ages!

- Bounce house
- Bucket rides
- 7" bucket trucks for 12 lucky kids in a kids-only drawing
- Picnic lunch
- Visit with employees
- Wood handled ice cream scoop (one per membership)

This event is for co-op members served by Lake Country Power.



▶ Lake Country Power hosted the Minnesota Rural Electric Association District 2 meeting at the Cohasset Service Center in July. LCP General Manager Mark Bakk, Directors Mike Forsman and Bob Bruckbauer, MREA CEO Darrick Moe and others had the opportunity to share their focus and efforts to keep electricity affordable and reliable with State Sen. Grant Hauschild of Hermantown.

May 23, 2023 • Regular Monthly Meeting

THE FOLLOWING REPORTS WERE GIVEN:

President Olson reported that he attended his District 7 member meeting and the District 8 meeting in Cromwell. He also reported fielding several member comments and calls to management for follow up.

General Manager Bakk reported on Great River Energy having difficulty developing wind projects in Greater Minnesota, while projects in North Dakota have gone smoothly. He also met with Hibbing Public Utilities to review and discuss service territories, future generation, transmission needs for northern Minnesota and more.

Editor's Note: These board minutes have been condensed. A full copy of the board minutes can be read at www.lakecountrypower.coop under "My Cooperative." You'll need to sign up for access if you haven't already. Or call 800-421-9959 for a printed copy.

THE FOLLOWING ACTIONS WERE TAKEN:

Approved the 2024 Lake Country Power Annual Meeting to be held April 25, 2024, at Merritt Elementary School in Mountain Iron.

Sought members to serve on the Operation Round Up® Electric Trust Board (ORU) in Districts 3, 6 and 7, with a timeline to have new trustees approved by July, in time for the September ORU meeting.

Unanimously approved four contractors on the construction bidder list for LCP's 2024 construction work.

Approved the 2022 Long-Range Load Forecast prepared by LCP staff in cooperation with Great River Energy.



▶ Nancy Sura of Grand Rapids took this picture of a beautiful loon while she and her husband were fishing on Siseebakwet (Sugar) Lake.

ENERGY EFFICIENCY TIP OF THE MONTH

Did you know ceiling fans can make a room feel 4 degrees cooler? To save energy through ceiling fan use, remember to raise your thermostat a few degrees while fans are turned on. Ceiling fans can help improve comfort year-round. In the summer, operate ceiling fans in a counterclockwise direction. Reverse the direction to clockwise during winter months and set fans on a low speed so warm air can circulate from the ceiling to the lower levels of the room. Remember, ceiling fans cool people, not spaces. Be sure to turn them off when you leave the room. Source: energy.gov

Comparative Operating Statement

Year-To-Date — May 2023

The following figures are preliminary and unaudited year-end financials.

	2023	2022
Electric Operating Revenue	\$ 48,615,471	\$ 47,847,492
Cost of Purchased Power	23,985,352	27,411,425
Distribution Expense - Operations & Maintenance	6,525,756	7,231,397
Consumer Accounts Expense & Informational	1,704,207	1,716,773
Administrative and General Expense	3,275,962	2,996,150
Depreciation, Interest Expense and Other Deductions	7,227,313	6,689,391
TOTAL ELECTRIC OPERATING EXPENSES	42,718,590	46,045,136
Net Electric Operating Margins	5,896,881	1,802,356
Non-Operating Margins	594,347	716,995
Total Margins before Subsidiaries	6,491,228	2,519,351
Net Income (Loss) from Subsidiaries	(63,669)	781
TOTAL MARGINS	\$ 6,427,559	\$ 2,520,132
TOTAL KWH SOLD (YEAR-TO-DATE)	330,584,244	357,470,664

Editor's Note: These financials are condensed. A complete set of financials can be viewed at www.lakecountrypower.coop under "My Cooperative." You'll need to sign up for access if you haven't already. Or call 800-421-9959 for a copy.

Co-op Contacts

Mark Bakk, General Manager	800-421-9959 mbakk@lcp.coop
Jason Long, District 1	218-240-9611 jlong@lcp.coop
Michael Forsman, District 2	218-365-5789 mforsman@lcp.coop
Steve Raukar, District 3	218-966-0298 sraukar@lcp.coop
Jeff Sheldon, District 4	218-398-6104 jsheldon1@lcp.coop
Robert Bruckbauer, District 5	218-290-8729 rbruckbauer@lcp.coop
Daniel Kingsley, District 6	218-259-7366 dkingsley@lcp.coop
Craig Olson, District 7	218-393-2276 colson@lcp.coop
Brian Napstad, District 8	218-485-1528 bnapstad@lcp.coop
Larry Anderson, District 9	218-428-2722 landerson@lcp.coop

Directors are members of the cooperative and are elected to act in the best interests of the co-op with the same care that an ordinarily prudent person in a like position would exercise under similar circumstances.

Directors set policy, approve strategy and are charged with fiduciary responsibility of the cooperative. Directors do not oversee day-to-day LCP operations. Administration of maintenance, electric service and operations are the responsibility of employees and staff.

Members with questions or concerns about service, billing, outages or other service-related matters should call 1-800-421-9959.

Newsline

Published monthly by Lake Country Power
8535 Park Ridge Drive, Mountain Iron, MN 55768
Editor: Jerry Burnes • jburnes@lcp.coop
Lake Country Power Service Centers:
Cohasset • Kettle River • Mountain Iron
800-421-9959 • www.lakecountrypower.coop
This institution is an equal opportunity provider and employer.





OPERATION ROUND UP® HAS INFUSED MORE THAN \$3M INTO LOCAL COMMUNITIES

Lake Country Power's Operation Round Up® program continues to help fund local community programs through the generosity of its participating members.

Since October 2004, LCP members have donated more than \$3.1 million to these programs and most recently helped fund 43 projects and \$49,950 in assistance, as approved by the Operation Round Up® Electric Trust Board.

Operation Round Up® is a charitable program unique to electric co-ops, which is designed to provide financial assistance to worthwhile activities and community projects by "rounding up" members' electric bills to the nearest dollar. The average donation of each participating Lake Country Power member is less than \$6 annually.

All funds generated through Operation Round Up® are set aside in a trust fund. A voluntary Trust Board of nine co-op members administers the trust. Of the funds collected through the program, 100% is distributed to charitable organizations through an application and selection process. The Trust Board uses special guidelines and policies when choosing recipients.

If you're interested in signing up for Operation Round Up® or giving a special donation, there is a form on the other side of this insert. Fill it out and return to your local service center by mail or in person. Your contribution is greatly appreciated, and a little change can make a big difference!

You too can help a neighbor for less than a dollar a month. We'd like to encourage you to climb back on board with Operation Round Up® if you once opted out of helping others through the program. You'll give no more than \$11.88 a year.

You can opt into the program by completing this form and mailing it to Lake Country Power, 8535 Park Ridge Dr. Mountain Iron, MN, 55768.

Special one-time or occasional contributions are also welcome and appreciated.



I WANT TO HELP OPERATION ROUND UP®!

- Yes, I want to help others through Operation Round Up®. I understand that 100% of the funds collected are donated back into the local communities of northern Minnesota.

Name: _____

Address: _____

City: _____

State: _____

Zip: _____

Phone number on account or account number: _____

800-421-9959 | lakecountrypower.coop