

2021 Profile

LAKE COUNTRY POWER



History:

A member-owned cooperative

Lake Country Power is a Touchstone Energy Cooperative serving the rural parts of eight counties in northern Minnesota. It is Minnesota's largest geographic electric cooperative and provides electricity and other energy-related services to nearly 43,000 members.

Lake Country Power was formed on January 1, 1997 when the memberships of three electric cooperatives, Kettle River-based Carlton County Cooperative Power Association, Grand Rapids-based Dairyland Electric Cooperative and Virginia-based Northern Electric Cooperative Association, overwhelmingly voted to consolidate. The co-op's geographic service territory covers 10,872 square miles – one of the largest cooperative service areas in the United States.

Employees:

140

Service Centers:

Cohasset, Kettle River and Mountain Iron

Outposts:

Cook, Ely, McGregor, Remer and Saginaw

Electric Distribution:

Over 8,359 miles of distribution line; 6,173 overhead; 2,186 underground

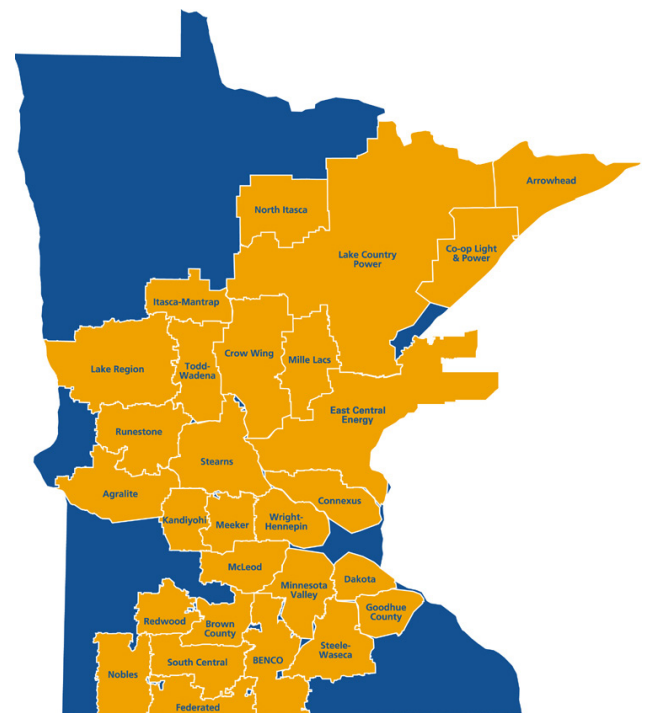
Total Services:

Total:	50,073
Residential:	46,035
Small Commercial:	3,873
Security Lighting:	164
Industrial:	1

Lake Country Power serves an average of 6.0 consumer-members per mile-of-line compared to all other utilities which average 32 customers per mile. Nearly 95 percent of LCP's membership base is residential and seasonal in the rural countryside.

Wholesale Power Supplier:

Great River Energy, a generation and transmission cooperative, is headquartered in Maple Grove, Minnesota. Great River Energy, www.greatriverenergy.com, provides electric energy and related services to Lake Country Power and 27 other distribution cooperatives in Minnesota and Wisconsin. GRE serves 700,000 consumer-members, or a population of 1.7 million people. By 2030, GRE's generation will consist of 50% renewables.



An electric cooperative is

Local, member-owned, responsive

Capital Credits Returned: \$4,921,000 in 2020*
More than \$61 million in capital credits has been returned to cooperative members through the years. **Includes general and estate retirements*

Economic Impact: (2020) Property taxes: \$1,140,000
Minnesota sales tax: \$5,226,000
County sales tax: \$253,000
Wages and benefits: \$21.5 million
Economic development loans: \$5.7 million since 1992

General Manager: Mark Bakk

Board of Directors: Nine-member board; one director per district

Other businesses: Subsidiaries include:

- Lake States Tree Service: a commercial tree service that contracts with electric utilities and private landowners for tree maintenance right-of-way clearing
- Lake States Construction: a utility construction company

Lake Country Power also offers Viasat high-speed satellite Internet service, as well as Wellspring Renewable Energy® to co-op members through a voluntary program to support renewable developments in Minnesota.

Minn. Legislative Districts Served: 3A, 3B, 5A, 5B, 6A, 6B, 10B, 11A, 3, 5, 6, 10 and 11

Counties Served: Aitkin, Carlton, Cass, Itasca, Koochiching, Lake, Pine, St. Louis

2020 Revenues: \$89.7 million (Average revenue per mile of line: \$10,730)

2020 Sales: 613,337,173 kilowatt-hours

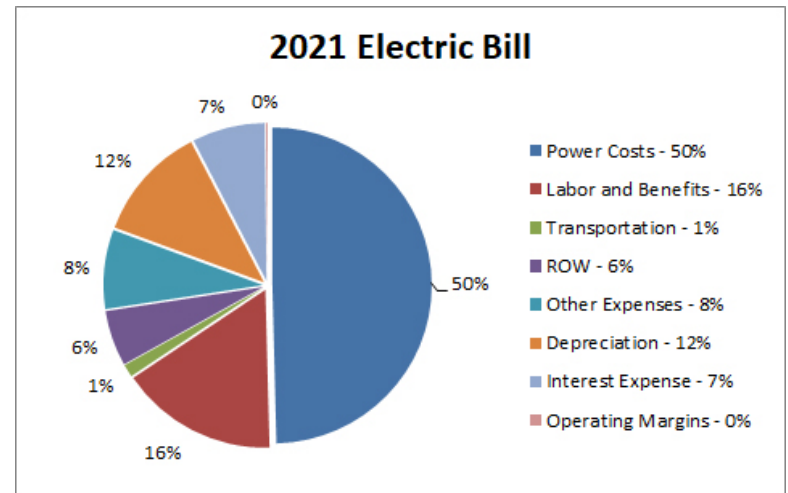
Total Plant Investment: \$379.4 million

Substations: 47

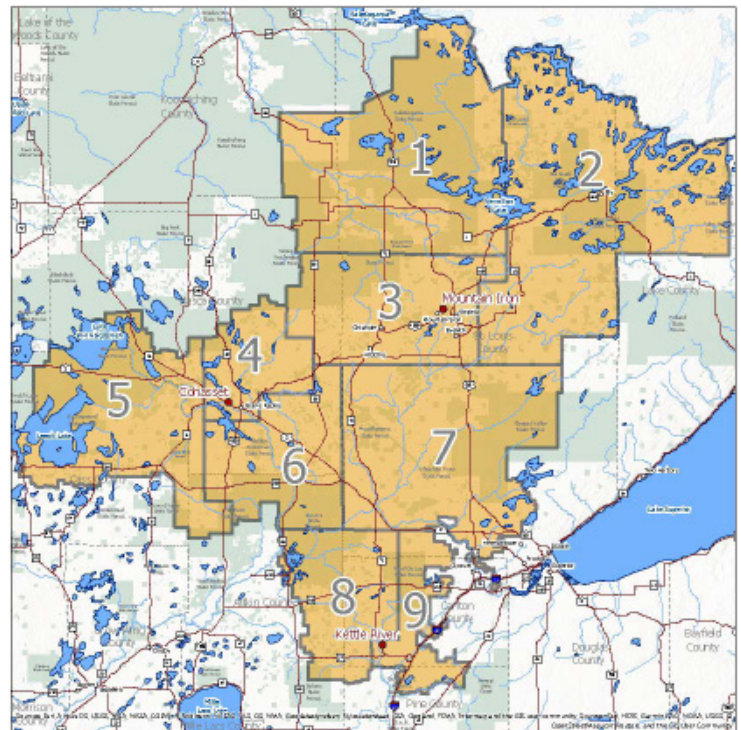
Web Site Address: www.lakecountrypower.coop

Local Operating Expenses

	2020	2019
Distribution Operations & Maintenance	\$15,211,507	\$15,168,723
Administrative & General	\$6,278,143	\$6,679,934
Customer Accounts & Service	\$3,854,998	\$4,443,687
Depreciation, Interest and Other Deductions	\$17,074,023	\$17,022,170
Total Local Expenses	\$42,418,671	\$43,314,514



Lake Country Power service area



Contact Information

800-421-9959

www.lakecountrypower.coop



Touchstone Energy®
Cooperatives

TOGETHERWESAVE.COM